

# Neutral / Start/Safety Switch Issues

- \* My Solenoid is not working
- \* My engine died, I was stuck on this steep on ramp
- \* I switched tanks and my engine quit at 70 mph.
- \* My Key switch will not go to the start position
- \* I have to rattle the shift lever to get it to start
- \* I stopped, now it won't start

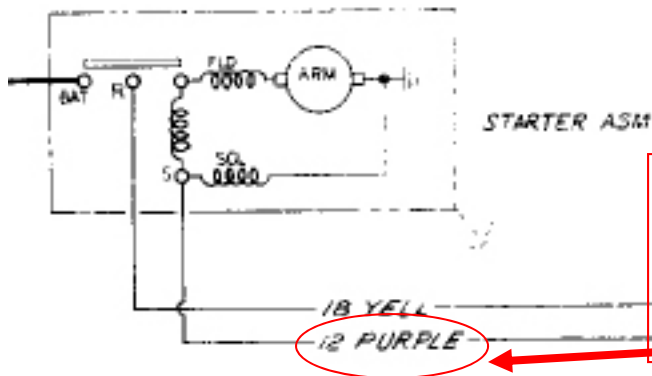


THIS WOULD BE COOL

These are symptoms of problems with the 30 year old, GMC steering column. Most of the problems are with the Neutral/start/safety switch. You can replace the nsss switch, key cylinder, steering column, shift linkage, etc, but in the heat of the moment, you should at least know where these connections are, and, in my case, I put in an EMERGENCY START SWITCH.

# STARTER SOLENOID CONTROL

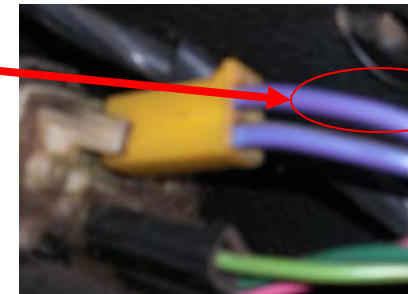
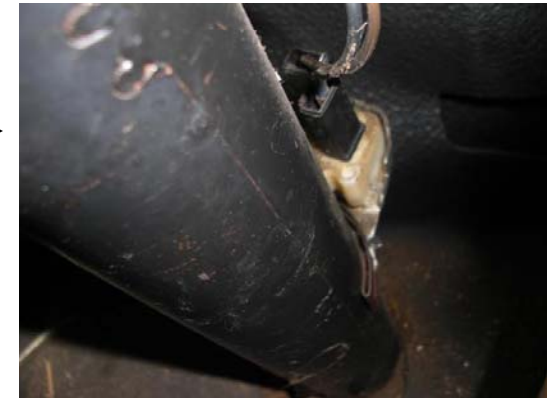
Points Distributor



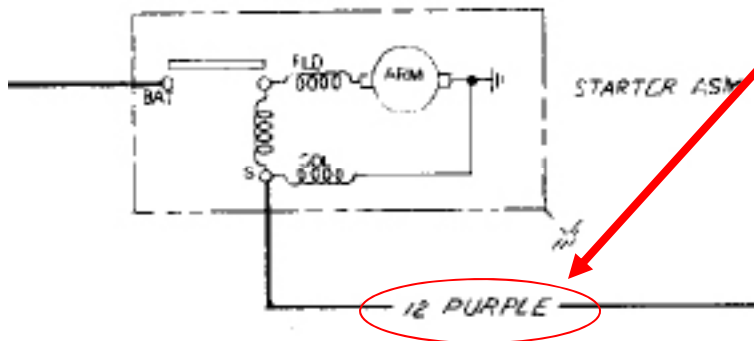
Lower

Steering Column Right

Solenoid power from the Neutral/Start/ Safety Switch

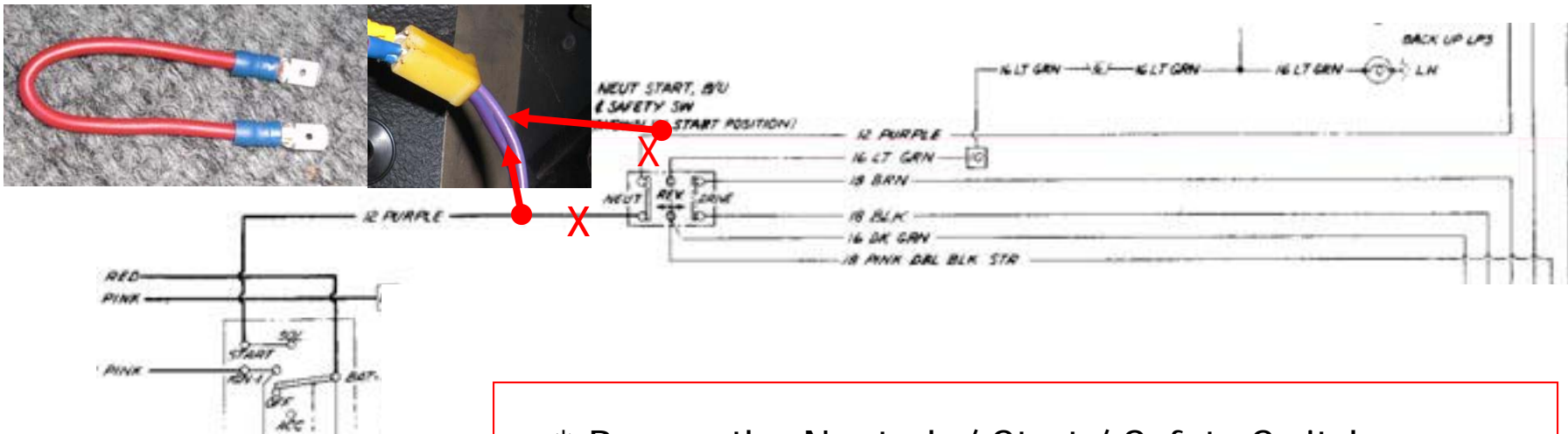


HEI Distributor



Steering Column Left

# Neutral / Start/Safety Switch Bypass Jumper



- \* Bypass the Neutral / Start / Safety Switch
- \* Unplug the connector from the NSSS
- \* Plug in the jumper
- \* Now the NSSS cannot cause a problem

# Neutral / Start/Safety Switch REMOTE START SWITCH

